



# HunterDouglas

DESIGN STUDIO 

Custom. Redefined.



TABLE OF CONTENTS



● CHOOSE A STYLE..... 06   ● SELECT A FABRIC.....16   ● PICK A SYSTEM..... 17   ● ADD A VALANCE.....18   ● PERSONALIZE IT..... 20   ● GET CREATIVE..... 22

**HunterDouglas**  
DESIGN STUDIO  
Custom. Redefined.

GET CREATIVE WITH NEW CUSTOM SOFT ROMAN SHADES FROM HUNTER DOUGLAS DESIGN STUDIO. WE'VE MADE IT EASY. CHOOSE FROM FOUR DISTINCTIVE STYLES, EACH DESIGNED AND CRAFTED WITH HUNTER DOUGLAS QUALITY AND INNOVATION. EXPLORE OUR EXCLUSIVE COLLECTION OF ARTFULLY CURATED FABRICS — SOPHISTICATED TEXTURES, PATTERNS, STRIPES, RICH SOLIDS AND SHEERS. THEN, REFLECT YOUR PERSONAL STYLE BY ADDING COORDINATING VALANCES, TAPES AND TRIMS, MAKING YOUR WINDOWS TRULY UNIQUE. HUNTER DOUGLAS DESIGN STUDIO. CUSTOM. REDEFINED.

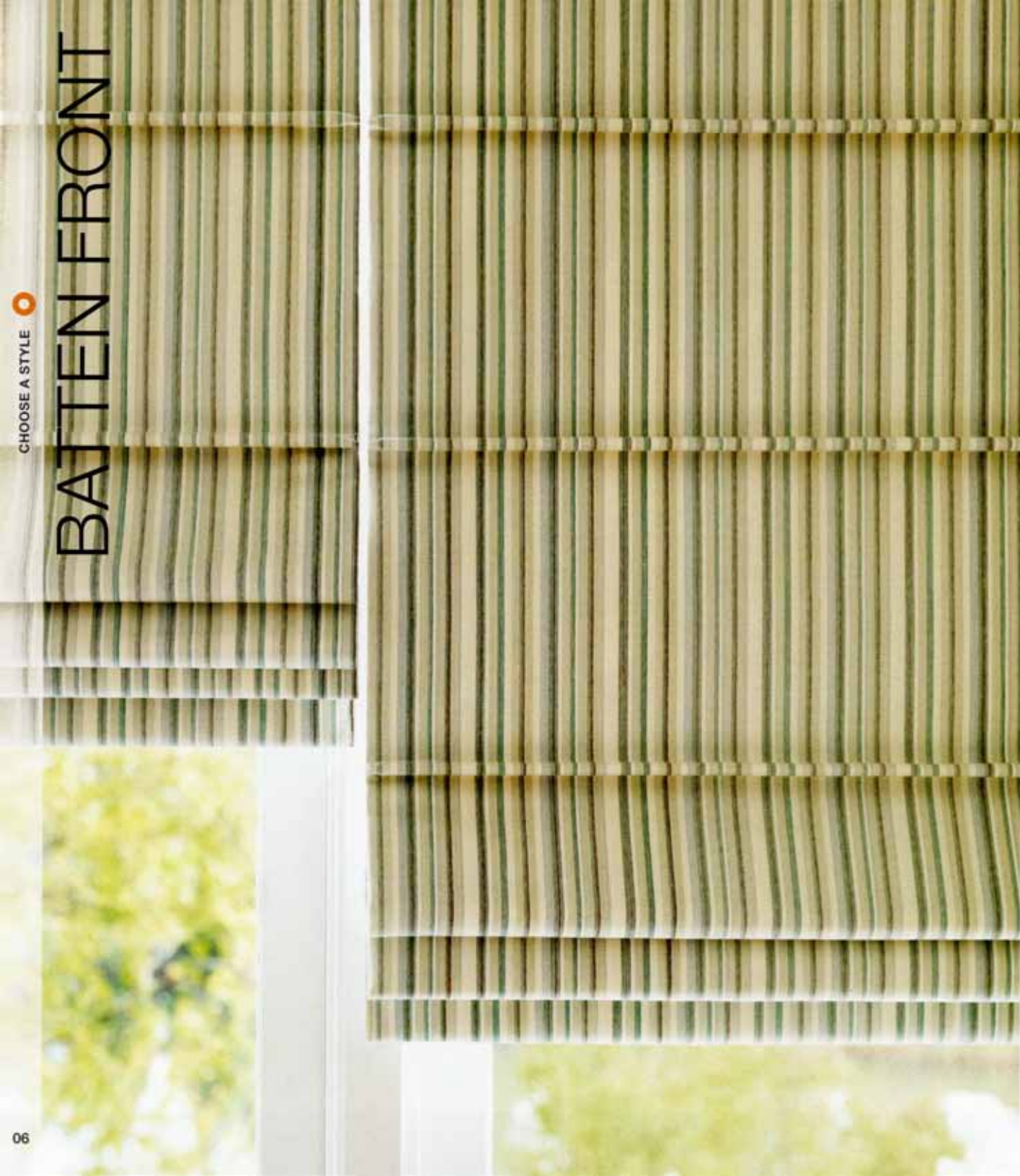
At Hunter Douglas, the difference is in the details. Design Studio fabrics are woven in widths that allow shades to be made up to 96" wide without being interrupted by seams. Every shade offers high quality construction. Our innovative cording system reduces access to the rear cords for enhanced child safety. Clear rings coordinate with all linings and sheers. Stiff battens provide structure. Batten tunnels are sewn to keep battens from slipping out. And all hems are double-turned for a custom finished look, with bottom hems weighted for a smooth appearance.



Hunter Douglas Design Studio

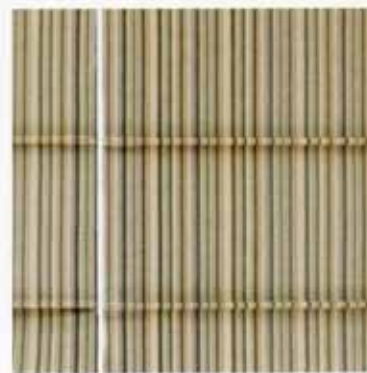
We've designed a collection of over 300 timeless fabrics, woven with the finest blends of cottons, linens, silks and synthetic fibers from around the world. Complemented by our distinctive range of tapes and trims, they work perfectly with Roman shades in all environments — from traditional to contemporary. We're bringing Hunter Douglas to the world of soft window fashions. And bringing the best in Roman shades to your home.

## BATTEN FRONT

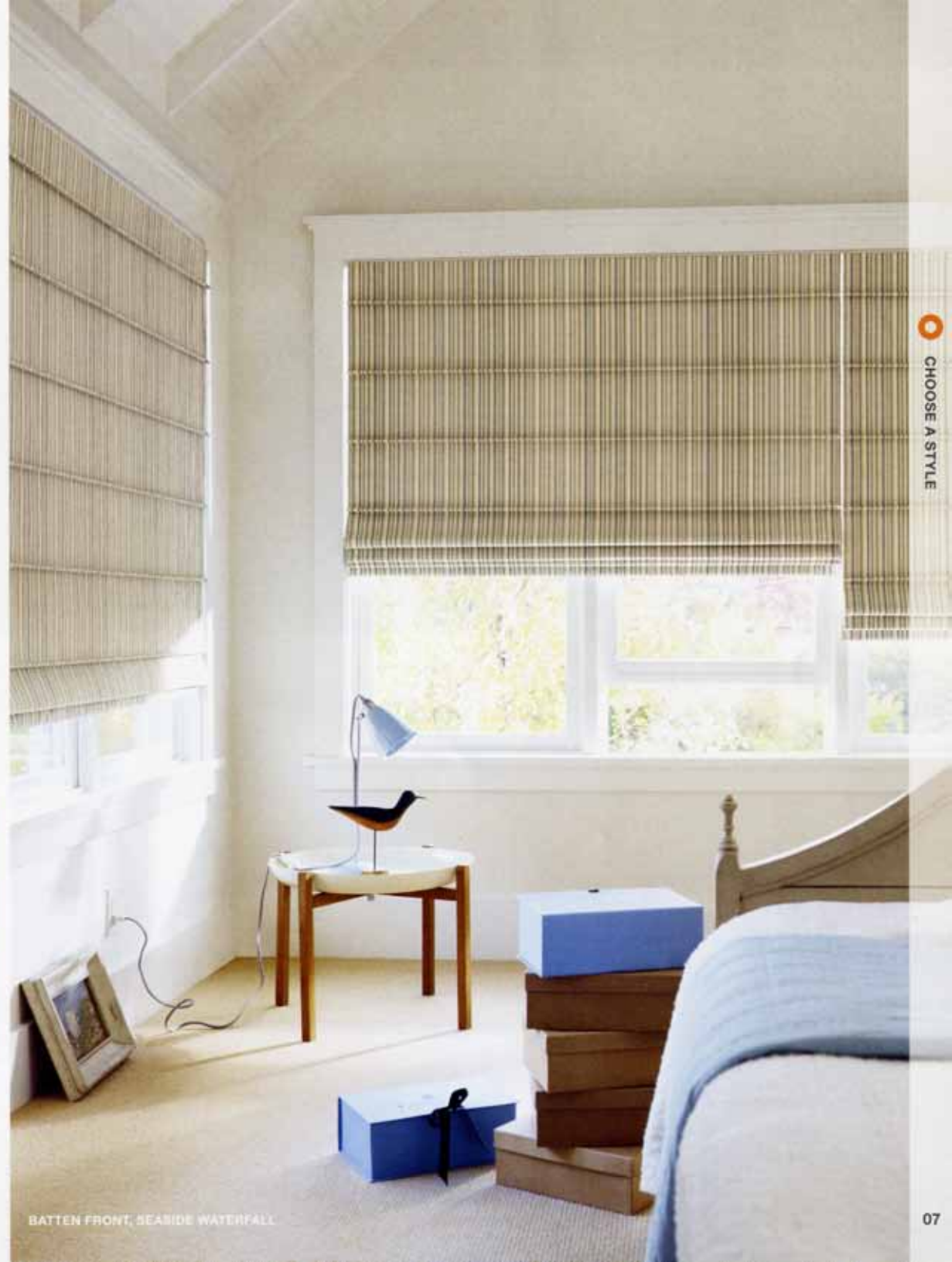


**BATTEN FRONT** ROMAN SHADES ARE CHARACTERIZED BY BATTENS, OR TUNNELS, SEWN AT REGULAR INTERVALS ON THE FACING SIDE OF THE SHADE. THE CLEAN, DIMENSIONAL LINES OF THIS STYLE WORK WELL IN ALL ENVIRONMENTS. WHEN A STRIPE OR PATTERN FABRIC IS SELECTED, BATTEN FRONT IS A GREAT CHOICE BECAUSE THE BATTENS ON THE FRONT WON'T INTERFERE WITH THE PATTERN.

- Especially well-suited for stripes and patterns.
- Available with all fabrics.
- Tunnels tacked on the side to prevent battens from coming out.
- Consistent spacing between battens.
- Spacing at top varies by shade height.
- Clear rings.
- Double-turned side hems and bottom hems.
- Seamless up to 96" wide.



When two or more shades of the same height are ordered as side-by-side shades, the battens align within a tolerance, providing a finished, harmonious look to your room.



BATTEN FRONT, SEASIDE WATERFALL



**BATTEN BACK** ROMAN SHADES HAVE INVERTED TUNNELS THAT CREATE A SOFT, TAILORED LOOK WHEN LOWERED AND DEFINED FOLDS WHEN RAISED. THIS STYLE REQUIRES THE LEAST AMOUNT OF DRESSING WHEN RAISING OR LOWERING THE SHADE, LOOKING GREAT IN ANY POSITION.

- Not recommended for vertical stripes and large-scale patterns if uninterrupted pattern is desired.
- Available with all fabrics.
- Tunnels tacked on the side to prevent battens from coming out.
- Consistent spacing between battens.
- Spacing at top varies by shade height.
- Clear rings.
- Double-turned side hems and bottom hems.
- Seamless up to 96" wide.



Design Studio Gridlock Rattan is a beautifully woven textured fabric that creates a sense of warmth and calm while providing privacy.





**FLAT** ROMAN SHADES HAVE NO HORIZONTAL SEAMS OR STITCHING ACROSS THE FACE OF THE SHADE, MAKING THEM THE BEST CHOICE FOR SHOWING OFF LARGE-SCALE PATTERNS AND STRIPES.

- Folds generally require dressing when the shade is raised or lowered.
- Not available with sheer fabrics.
- Not available with cordlock lifting system.
- Clear rings.
- Double-turned side hems and bottom hems.
- Seamless up to 96" wide.



The Bromley trim is one of our custom trim choices, available in ten colors. Design Studio trims, set flush with the bottom of our shades, add an unexpected flourish to a classic Flat style shade.



FLAT, MUSEUM FRENCH HORN BROMLEY GOLDEN CREST TRIM



**HOBBLE** IS A CLASSIC STYLE DEFINED BY SOFT FABRIC FOLDS WHICH CASCADE FROM TOP TO BOTTOM. DESIGN STUDIO HOBBLE SHADES HAVE A UNIQUE, TRIPLE-LAYER FABRIC CONSTRUCTION WITH A DOUBLE LINING, PROVIDING UNSURPASSED ENERGY EFFICIENCY.

- Triple-layer fabric construction.
- Large-scale patterns could be interrupted in the overlapping folds.
- Not available with sheer fabrics.
- Back tunnels tacked on the side to prevent battens from coming out.
- Consistent spacing between folds.
- Spacing at top varies by shade height.
- Clear rings.
- Double-turned side hems and bottom hems.
- Seamless up to 96" wide.



The triple-layer fabric construction of Design Studio Hobbler shades helps establish even spacing between folds — adding body and fullness to the shade.





BATTEN-FRONT, CAMDEN ICEBERG

**SHEERS** BRING A LOVELY QUALITY OF DIFFUSED LIGHT INTO A ROOM WHEN PRIVACY IS LESS OF A CONCERN AND CAN BE A GREAT CHOICE WHEN USED IN COMBINATION WITH OTHER SHADES OR DRAPERY.

- Color-coordinated components, including cords, hem weights and battens.
- Available only with Batten Front and Batten Back styles.
- Not available with lining.
- Not available with tapes or trims.
- Tunnels tacked on the side to prevent battens from coming out.
- Consistent spacing between battens.
- Spacing at top varies by shade height.
- Seamless up to 96" wide.



Camden Iceberg, a subtle striped sheer, filters the light through your window and softens your view of the outside. Design Studio sheers are available in patterns, stripes, textures and solids in an array of colors.

**FRENCH DOOR APPLICATIONS** REQUIRE MINIMAL MOUNTING DEPTH, AND DESIGN STUDIO ROMAN SHADES WITH THE CORDLOCK LIFTING SYSTEM PROVIDE AN EXCELLENT SOLUTION FOR A COORDINATED LOOK THROUGHOUT YOUR ROOM.

- Minimal mounting depth (1½") available with the cordlock lifting system.
- Fabric "waterfalls" off the top of the fabric-wrapped headrail.
- Fabric-covered ends provide a clean, finished look.
- Cordlock lifting system available with all fabrics.
- Hold-down brackets are not required.
- Outside mount and inside mount applications can be used in the same room.



The soft sheen of Dreamweaver Fountain, one of our non-sheer fabrics in a Hobble Roman shade, adds an elegant touch to your room, while controlling light and enhancing energy efficiency.



HOBBLE, DREAMWEAVER FOUNTAIN

## REFINE YOUR STYLE.

Do you require privacy? Room darkening? Or would you like the light to gently filter into your room? The uniquely edited collection of Design Studio fabrics work for all your windows, whatever the need. Textures, sheers, solids, patterns and stripes — they're all organized by color families in six fabric books to make the selection process a simple one.

### FABRICS



Light Neutrals



Medium Neutrals



Dark Neutrals



Blues/Greens



Reds/Oranges



Sheers



A STRIPED FABRIC LIKE SASHAY MAKES A BOLD, CONTEMPORARY STATEMENT, WHILE DRAPERY ADDS A TOUCH OF ELEGANCE. (PICTURED: DRAPERY MADE WITH FABRIC BY THE YARD: GRANDEUR ATMOSPHERE; FLAT ROMAN SHADE: SASHAY CADET)

Non-sheer fabrics are available in:

- Batten Front, Batten Back, Flat and Hobble styles.
- Lining is required.



WHEN PRIVACY IS NOT AN ISSUE AND A DIFFUSED VIEW IS DESIRED, A SHEER BATTEN FRONT ROMAN SHADE SOFTENS THE LIGHT AND ADDS AN ELEMENT OF ROMANCE. (PICTURED: DRAPERY MADE WITH FABRIC BY THE YARD: POISE BLUE STONE WITH BRUNSWICK CASHMERE TRIM; BATTEN FRONT ROMAN SHADE: SHINE GOLD DUST)

Sheer fabrics are available in:

- Batten Front and Batten Back styles.
- Lining is not available with sheer fabrics.

### LININGS



Light Filtering



Room Darkening

LININGS GIVE OUR FABRICS MORE BODY AND SUBSTANCE, INCREASE THEIR OPACITY, ALLOW MORE LIGHT CONTROL AND PROVIDE ENERGY-SAVING INSULATION. CHOOSE FROM LIGHT FILTERING OR ROOM DARKENING, IN EITHER WHITE, CREAM OR LATTE.

Linings are available in:

- Light filtering, standard.
- Room darkening, may be specified.

## UPS AND DOWNS.

Choose between Continuous Cord Loop and Cordlock — two great lifting systems offering unparalleled Hunter Douglas quality engineering.

### LIFTING SYSTEMS



Continuous Cord Loop

**CONTINUOUS CORD LOOP SYSTEM**  
EASILY LIFTS SHADES; MAKING HEAVIER SHADES FEEL LIGHTER AND RAISE MORE EVENLY.

- Fabric appears to "waterfall" off the top of the headrail.
- Fabric-covered end caps provide a clean, finished look.
- Available with all shade styles.
- Available up to 96" wide and 96" high.
- For outside mount shades, an optional dust cover is available.
- Mounting depth is 2½".



Cordlock

**CORDLOCK SYSTEM**  
ACTIVATES WITH A STRAIGHT-PULL ACTION, ELIMINATING THE NEED TO OPERATE WITH A SIDE-TO-SIDE MOTION TO RAISE OR LOWER THE SHADE.

- Fabric "waterfalls" off the top of the fabric-wrapped headrail.
- Fabric-covered ends provide a clean, finished look.
- Available with Batten Back, Batten Front and Hobble styles.
- Available up to 60" wide and 96" high.
- Unique straight-pull cordlock operation.
- Minimal mounting depth is 1½".

## DRESS IT UP.

Whether paired with a Roman shade or used independently, a valance can bring a layer of sophistication to your windows. Fabrics can be chosen to either match or complement the fabric of the shade itself. And, pick your length — Design Studio valances are available in 8", 12" or 16".



A FLAT SHADE IS A PERFECT CHOICE FOR THIS FABRIC, MUSEUM FRENCH HORN, BECAUSE IT HAS A LARGE, OBVIOUS PATTERN. THE MATCHING VALANCE IS DISTINGUISHED BY BROMLEY GOLDEN CREST TRIM, PROVIDING AN ADDED TOUCH OF GLAMOUR.

### INSIDE MOUNT VALANCES



Flat with no returns

**FLAT VALANCE WITH NO RETURNS**  
A SIMPLE, CLEAN STYLE.

- Available in widths up to 96".
- When ordered with a shade of the same fabric, shade and valance patterns will align.



Box Pleat with no returns

**BOX PLEAT VALANCE WITH NO RETURNS**  
A TAILORED, TRADITIONAL STYLE.

- One pleat in center.
- Available in widths up to 150".

A VALANCE WITH NO RETURNS MOUNTS INSIDE YOUR WINDOW FRAME, PROVIDING A BUILT-IN LOOK WITHOUT COVERING MOLDING.

OPPOSITE PAGE: AN OUTSIDE MOUNT TREATMENT WITH RETURNS IS USED WHEN THERE ISN'T ENOUGH DEPTH IN THE WINDOW FRAME AND CAN ALSO MAKE A WINDOW LOOK LARGER.

Return sizes:

- 3½" is standard.
- 5½" optional, to accommodate shades with larger stacking depths.

### OUTSIDE MOUNT VALANCES



Flat with returns

**FLAT VALANCE WITH RETURNS**  
A SIMPLE, CLEAN STYLE.

- Available in widths up to 86".
- When ordered with a shade of the same fabric, shade and valance patterns will align.



Corner Kick Pleat with returns

**CORNER KICK PLEAT VALANCE WITH RETURNS**  
A REFINED, SIMPLE STYLE.

- Pleats on each corner.
- Available in widths up to 96".
- When ordered with a shade of the same fabric, shade and valance patterns will align.



Box Pleat with returns

**BOX PLEAT VALANCE WITH RETURNS**  
A TAILORED, TRADITIONAL STYLE.

- One pleat in center and pleats at corners.
- Available in widths up to 150".

## BRIGHT IDEAS.

Look for the unexpected. There are a surprising number of stylish ways to use a valance — with a Roman shade, with another window treatment, or even alone. Make *your* design statement.



2



3

1) A SINGLE BOX PLEAT VALANCE, AVAILABLE IN WIDTHS UP TO 150", CAN SPAN MULTIPLE WINDOWS AND TRANSFORM A ROOM. (PICTURED: MORELOS HENNA SHADES WITH MATCHING VALANCES) 2) VALANCES CAN ALSO BE PAIRED WITH OTHER HUNTER DOUGLAS PRODUCTS. (PICTURED: POISE RIVERBED VALANCE WITH COUNTRY WOODS® WOOD BLINDS) 3) VALANCES MAY BE ORDERED IN FABRICS THAT MATCH YOUR ROMAN SHADE FABRIC, OR FOR A DIFFERENT LOOK, VALANCES CAN BE ORDERED IN FABRICS THAT COMPLEMENT THE SHADE FABRIC. (PICTURED: CHARM CHALET SHADE, INSIGNIA BRONZED GOLD VALANCE)

## FINISHING TOUCHES.

Our exclusive selection of decorative tapes and trims allows you to create a truly custom look, taking your design vision to another, more refined level.



FRAME PLACEMENT, AVAILABLE ON FLAT SHADES, IS A BEAUTIFUL WAY TO ENRICH A SIMPLE SHADE STYLE WITH A DISTINCTIVE DESIGN ELEMENT. (PICTURED: BOHEMIAN ROBINS EGG SHADE FRAMED WITH MADISON DRIFTWOOD TAPE)

Frame placement is available in:

- All tape styles and Brielle trim only.
- Flat shade style only.
- Flat and Corner Kick Pleat valances only.

### TAPES

FORTROSE



MADISON



ANNABELLE



LATTICE



BRADBURY



BUCKINGHAM



### TRIMS

BRIELLE



BROMLEY



BRUNSWICK



#### TAPES AVAILABLE ON

- All shade styles.
- All valance styles.
- Frame placement on Flat style shades.
- Frame placement on Flat and Corner Kick Pleat valances.
- Not available on sheers.

#### BRIELLE TRIMS AVAILABLE ON

- All shade styles.
- All valance styles.
- Frame placement on Flat style shades.
- Frame placement on Flat and Corner Kick Pleat valances.
- Not available on sheers.

#### BROMLEY AND BRUNSWICK TRIMS AVAILABLE ON

- All shade styles.
- Flat valances.
- Not available on sheers.

## MAKE IT YOUR OWN.

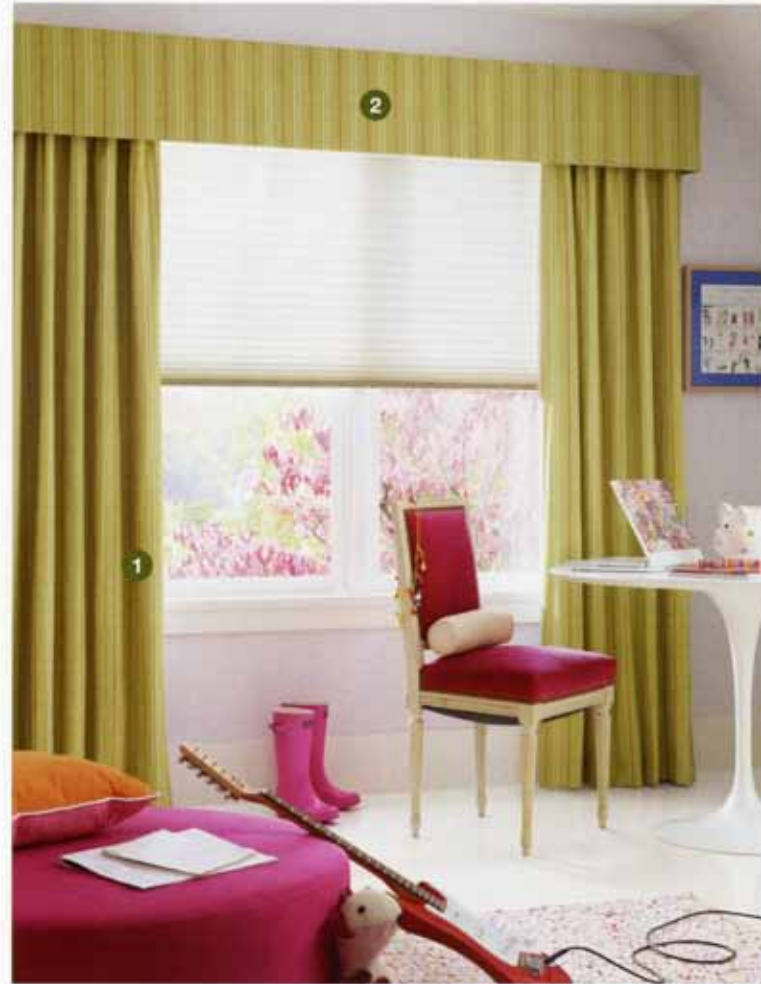
Personalize your window treatment using tape or trim. Match or contrast. Keep it traditional or go contemporary. It's up to you.



## ENDLESS POSSIBILITIES.

Have fun with Hunter Douglas Design Studio. Think windows — and beyond. All of our premium fabrics, tapes and trims are available by the yard for the ultimate in a coordinated environment, limited only by your imagination.

### FABRIC, TAPE AND TRIM BY THE YARD



1) IN THIS COLORFUL KID'S ROOM, CUSTOM DRAPERY HAS BEEN CRAFTED FROM A DESIGN STUDIO STRIPE — ZIPPER GRANNY SMITH AND 2) COMPLEMENTED BY A MATCHING FLAT VALANCE AND PAIRED WITH A HUNTER DOUGLAS DUELTE® ARCHITELLA® PANACHE™ GAMEDO HONEYCOMB SHADE.



#### FABRIC BY THE YARD

- All fabrics available in wide widths.
- Sold with a one-yard minimum cut, half-yard increments thereafter.

#### TAPE AND TRIM BY THE YARD

- Sold with a one-yard minimum cut, half-yard increments thereafter.



3) PILLOWS ARE A GREAT WAY TO TIE TOGETHER THE PALETTE OF A ROOM — THE PILLOWS SHOWN HERE ARE MADE WITH FLAIR BUTTER CREAM AND 4) RITZ GILDED BRONZE WITH GALAXY SABLE PIPING.



5) TAPES AND TRIMS PROVIDE AN EXCELLENT OPPORTUNITY FOR DESIGN COORDINATION THROUGHOUT A ROOM. THIS DRAPERY IS MADE WITH POISE BLUE STONE AND TRIMMED WITH BRUNSWICK CASHMERE.

The Hunter Douglas array of custom window fashions just keeps growing and improving. More intriguing styles and colors. More attractive features and designs. More ways to easily control light. More opportunities to increase energy savings.

Imagine what we can do for your home.



- 1) Silhouette® window shadings
- 2) Duette® honeycomb shades
- 3) Duette® Architella® honeycomb shades
- 4) Luminette® Privacy Sheers
- 5) Pirouette® window shadings
- 6) Vignette® Traditional™ Modern Roman Shades
- 7) Vignette® Tailored™ Modern Roman Shades
- 8) Skyline™ Gliding Window Panels
- 9) Heritage® hardwood shutters
- 10) Country Woods™ wood blinds
- 11) Provenance® Woven Wood Shades, grasses
- 12) Provenance® Woven Wood Shades, bamboo and reeds
- 13) Park Lane™ Privacy Sheers
- 14) Design Studio Roman Shades, hobble style
- 15) Design Studio Roman Shades, baiter front style
- 16) Modern Precious Metals® aluminum blinds
- 17) Palm Beach™ polysatin shutters
- 18) Designer Roller Shades
- 19) Designer Screen Shades
- 20) Applause® honeycomb shades
- 21) NewStyle® hybrid shutters
- 22) EverWood™ Collection alternative wood blinds
- 23) Brilliance® pleated shades
- 24) Nantucket™ window shadings
- 25) Custom Vertical Blinds
- 26) Crosswinds® Wood Vertical Blinds
- 27) Revolutionary Platinum™ Technology motorized systems

# HunterDouglas

hunterdouglas.com

WE ARE  
**Hunter  
Green**

The Hunter Green designation represents our commitment to providing you with stylish and innovative window fashion designs that reduce energy loss at the window, help protect your furnishings from sun damage, and add comfort and beauty to your home. It also symbolizes an aggressive company-wide effort to reduce our own carbon footprint by 20% by the year 2012.

— The —  
**HUNTER DOUGLAS  
ADVANTAGE**

Hunter Douglas offers the largest and most diverse collection of innovative, stylish and energy-efficient window fashions. Designed with safety in mind and custom-assembled in the U.S.A. and Canada to your specifications, our window fashions are backed by an exclusive Lifetime Guarantee. For the very highest quality, insist on Hunter Douglas.



The Hunter Douglas Lifetime Guarantee is an expression of our desire to provide a thoroughly satisfying experience when selecting, purchasing and living with your window fashion products. If you are not thoroughly satisfied, simply contact Hunter Douglas Inc. at 1-888-501-8364 or visit [hunterdouglas.com](http://hunterdouglas.com).



# HunterDouglas

[hunterdouglas.com](http://hunterdouglas.com)

© 2009 Hunter Douglas. LIT88804 6/09

